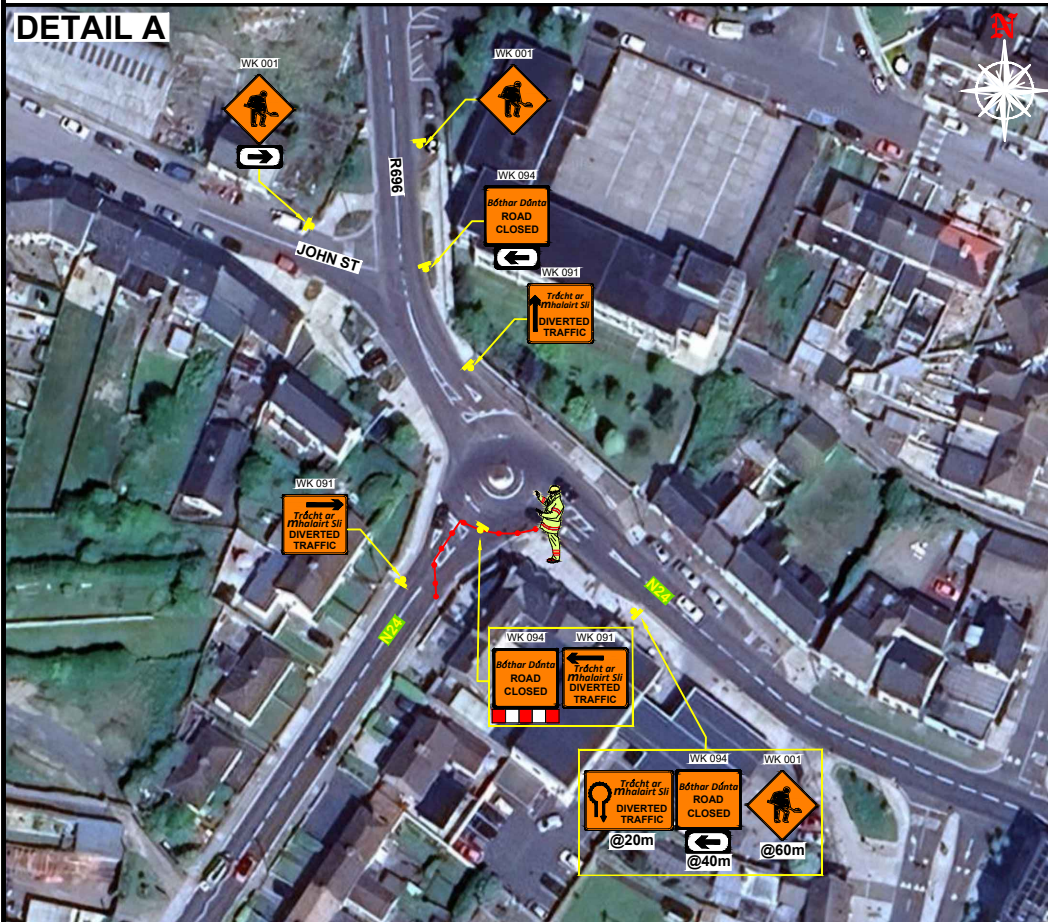
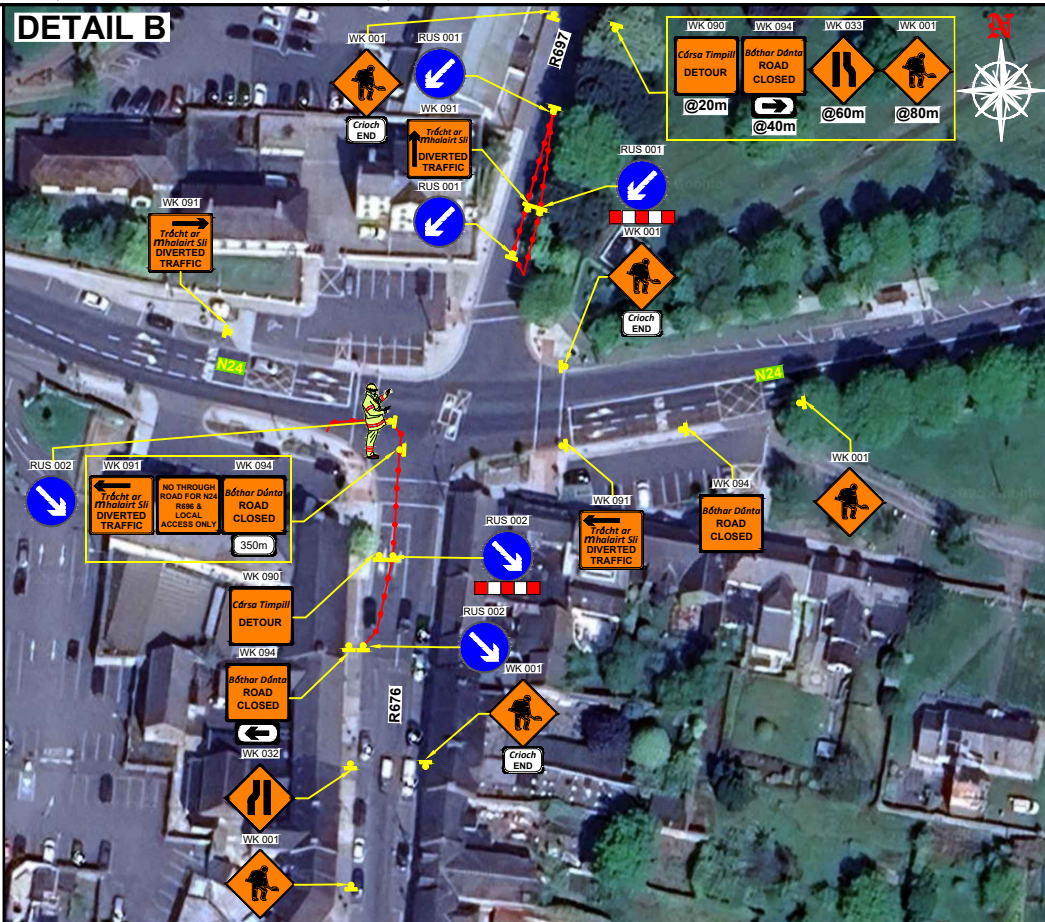


N24, CLONMEL ROAD, CO. TIPPERARY - ROAD CLOSURE 2

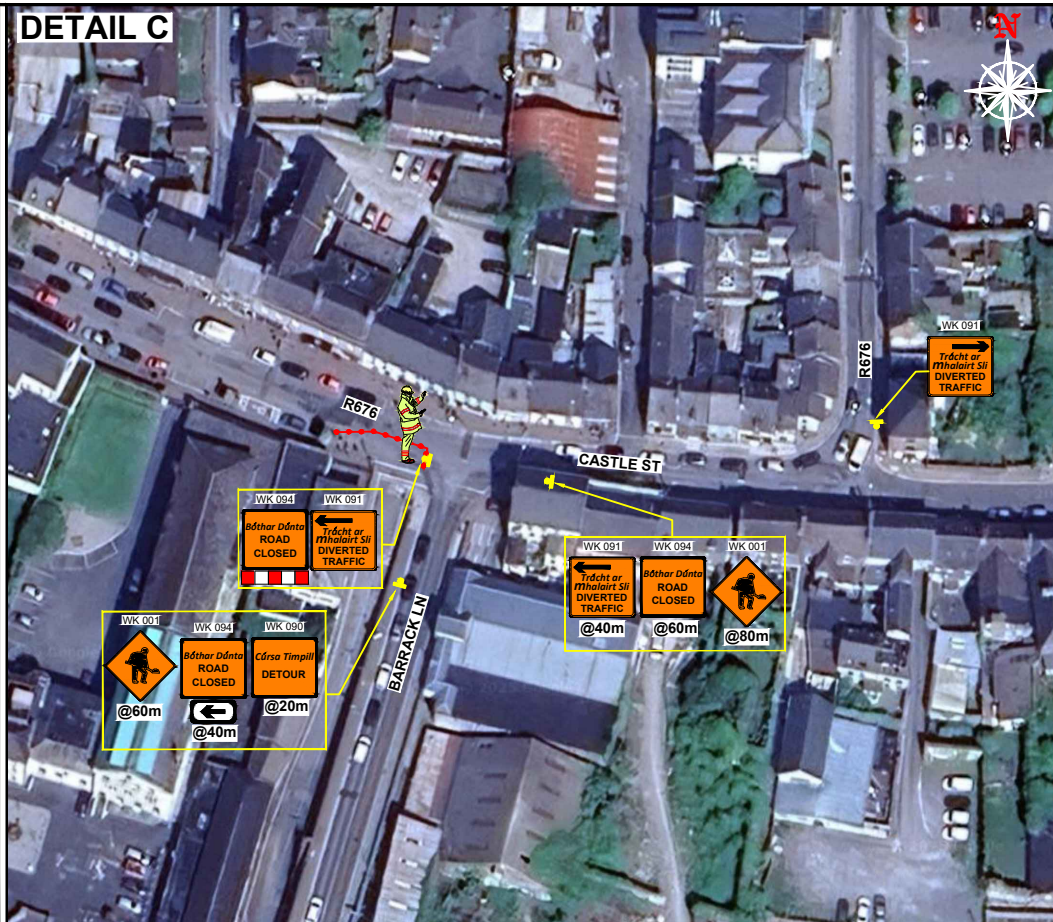
DETAIL A



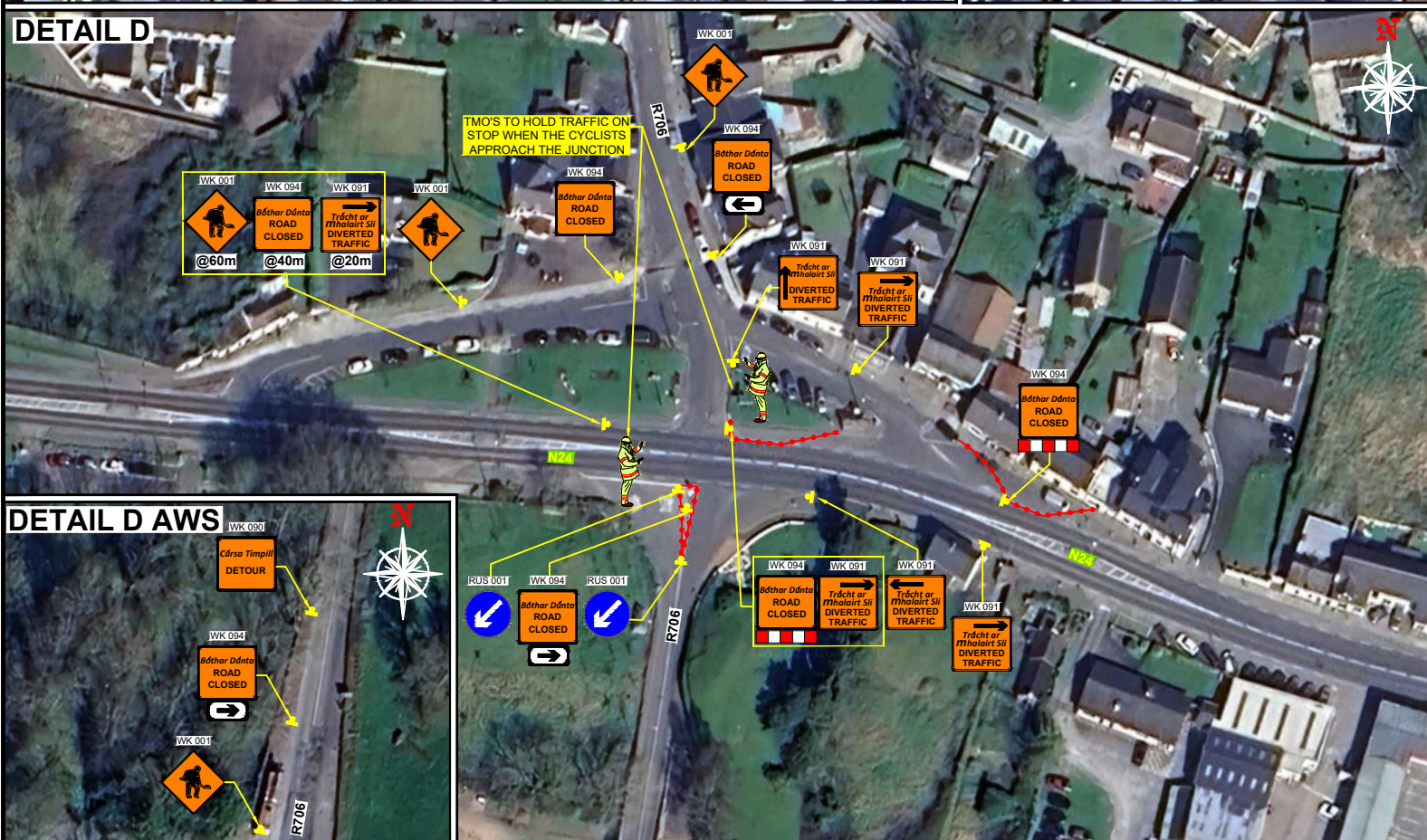
DETAIL B



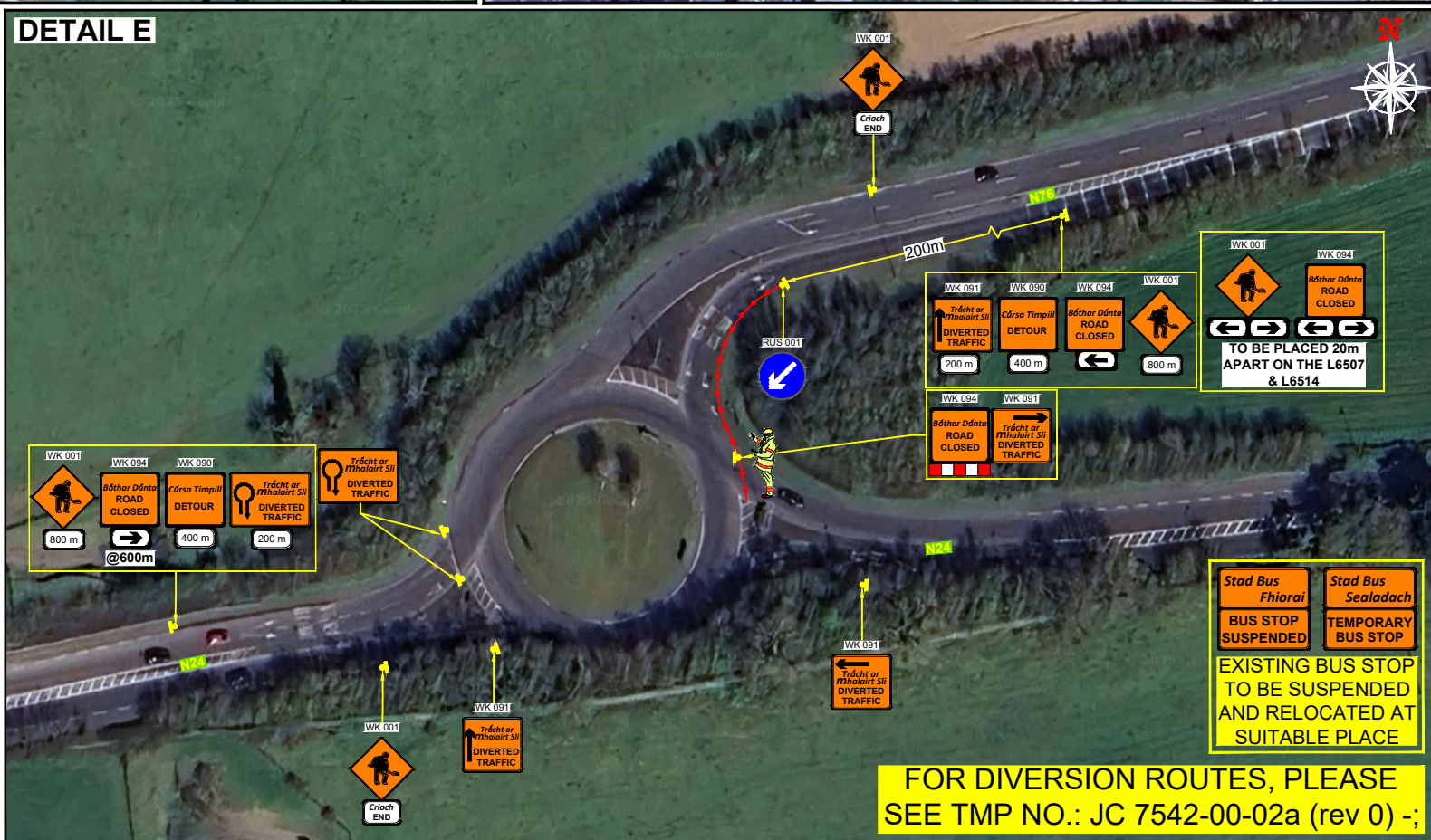
DETAIL C



DETAIL D



DETAIL E



DESIGN PARAMETERS				SAFETY ZONE			TEMPORARY SIGNS				CONE SPACING AND SIZE			RATE OF TAPER		LAMP SPACING		TRAFFIC MANAGEMENT SYSTEM		
Row Lvl(Sub)	Roadworks Type	Speed Limit (km/h)	Min. Lane Width (m)	Longitudinal (m)	Lateral (m)	Set Back (m)	Distance (m)	Number	Min. Size (mm)	Sign Visibility (m)	Longitudinal (m)	At Tapers (m)	Min. Height (mm)	Taper at H/ S (m)	Taper at Lane (m)	At Tapers (m)	Longitudinal (m)	Method	Coned Area Length (m)	Max. Traffic Flow (veh/h)
1 (iii)	A	50	3.00	5	0.5	-	20	2	600	50	3	3	750	1 in 5	1 in 5	6	6	Road Closure	n/a	n/a
2 (i)	A	80	3.00	45	1.2	-	120	4	600	90	12	3	750	-	-	6	24	Road Closure	n/a	n/a
2 (ii)	A	100	3.00	60	1.2	-	200	4	750	120	12	3	1000	-	-	6	24	Road Closure	n/a	n/a

<p>1) ALL INFORMATION CONTAINED IN THIS DRAWING SHOULD BE CHECKED AND VERIFIED BY CONTRACTOR PRIOR TO ANY STAGE OF CONSTRUCTION.</p> <p>2) ALL WORKS ARE TO BE CARRIED OUT IN ACCORDANCE WITH LOCAL AUTHORITY REQUIREMENTS AND ARE TO BE INCLUDED IN THE SITE-SPECIFIC SAFETY & HEALTH PLAN.</p> <p>3) A SITE-SPECIFIC RISK ASSESSMENT SHALL BE CONDUCTED PRIOR TO IMPLEMENTING THE TEMPORARY TRAFFIC MANAGEMENT PLAN TO ENSURE THAT THE ACTUAL SITE CONDITIONS ALIGN WITH THOSE CONSIDERED DURING THE DESIGN PHASE FOLLOWING SUBMISSION</p>	<p>4) CONTRACTOR SHALL BE RESPONSIBLE FOR THE PROVISION OF RAMP ACCESS AT ANY CHANGE IN ROAD SURFACE LEVEL WHERE TRAFFIC RUNS ON A TEMPORARY SURFACE.</p> <p>5) THIS TRAFFIC MANAGEMENT PLAN MAY ONLY BE IMPLEMENTED BY A TTS WHO MUST CARRY OUT A RISK ASSESSMENT BEFORE IMPLEMENTATION. TTOS MUST BE IN POSSESSION OF CSCS CARD "SIGNING, LIGHTNING AND GUARDING AT ROAD WORKS" CONSTRUCTION REGULATIONS 2006.</p> <p>6) EXACT SIGNS POSITIONS TO BE AGREED ON SITE.</p>	<p>NOTES:</p> <p>7) ACCESS TO BE MAINTAINED TO ALL DWELLINGS / BUSINESSES AT ALL TIMES.</p> <p>8) SITE INSPECTIONS AND MAINTENANCE OF THE TRAFFIC MANAGEMENT LAYOUT IS TO BE CONDUCTED ON A DAILY BASIS TO ENSURE THE SAFETY AND INTEGRITY OF THE DESIGN.</p> <p>9) ALL TEMPORARY FOOTWAYS MUST HAVE A GOOD QUALITY, EVEN SURFACE AND BE MAINTAINED FREE FROM OBSTRUCTION.</p> <p>10) PEDESTRIANS TO BE PROTECTED FROM WORKS AREA BY PEDESTRIAN BARRIER SYSTEM.</p>	<p>11) TTOS TO MANAGE SITE/LOCAL ACCESS/EGRESS & TO INFORM MOTORISTS ABOUT DIVERSION ROUTES.</p> <p>12) RESIDENT TO BE INFORMED BEFORE COMMENCING THE WORKS.</p> <p>13) CONTRACTOR TO LIAISE WITH LOCAL BUS AUTHORITY IF ANY OF THE BUS STOPS HAVE TO BE RELOCATED AND SUITABLE BUS DIVERSION ROUTES.</p>
--	--	--	---

LEGEND

● ● ● ● - TRAFFIC CONES
 | ← - SIGN LOCATION

GKHM **GARY KEVILLE TRAFFIC MANAGEMENT LTD.**
 Rosemount Business Park, Dublin 11, Co. Dublin, Ireland
 Tel: (+3531) 667 4322; Email: info@gktm.ie
 Visit us at: www.gktm.ie

CLIENT:	
---------	--



DESIGNED:	VB	SCALE	PROJECT TITLE: N24, CLONMEL ROAD, CO. TIPPERARY	
DRAWN:	VB	NTS	DRAWING NAME: ROAD CLOSURE 2	
VERIFIED:	SS	DATE:		
APPROVED:	AM	20-08-2025	STAGE: CONSTRUCTION	DWG. No.

Rev. No.:	Revision Details	Rev. Date:	Designed:	Drawn:	Verified:	Approved:	Copyright Notes: THIS DRAWING IS THE PROPERTY OF GARY KEVILLE TRAFFIC MANAGEMENT. THE DESIGN INFORMATION CONTAINED HEREIN IS STRICTLY CONFIDENTIAL. THIS DOCUMENT IS NOT TO BE USED, REPRODUCED, DISCLOSED OR CIRCULATED WHOLE OR IN PART WITHOUT THE PRIOR WRITTEN CONSENT IN EACH INSTANCE OF GARY KEVILLE TRAFFIC MANAGEMENT. © GKTM 2023